

# GOING PLACES UK

FABULOUS FAMILY DAYS OUT IN  
THE EAST & WEST MIDLANDS • SUMMER 2023



**FREE**



**A quest to love Tamworth**  
Page 5



**20th anniversary celebrations at Matlock Farm Park**  
Page 8



**Fantastic happenings at Heights of Abraham**  
Page 10

## A canal journey through history

Page 3



**WIN**

**Family Tickets for West Midlands Safari Park**

See page 3 for details

**Family Tickets for Amerton Farm**

See page 8 for details



WEST MIDLAND  
**SAFARI  
& LEISURE  
PARK**

**50**  
WILD YEARS

**NEW  
TIGER  
TROPICS**

THRILLING  
RIDES

UP CLOSE  
ENCOUNTERS

**BOOK NOW WMSP.CO.UK**

# West Midland Safari Park Celebrates 50th Year



2023 is an exciting year for West Midland Safari Park, as it celebrates its 50th birthday.

The popular Bewdley attraction was opened by famous actress, Sophia Loren, on 17 April 1973 and has since been home to thousands of beautiful, exotic and endangered animals.

Nowadays the Park is home to 118 species and over 1,000 individuals, many of which are classed as 'endangered', such as African wild dogs, lemurs, red pandas, Grevy's zebra and 'critically endangered' Sumatran tigers and golden mantella frogs.

**WIN**

**Enjoy a unique day out with us**

Jump on board one of our narrowboats and journey back to a magical underground world, which dates back 428 million years.

Sit back and relax, while marvelling at our breath-taking subterranean environment. Our knowledgeable skippers will provide an interesting commentary as they guide you through.

You can also enjoy a snack, drink, or meal in our recently remodelled Gongoozler Café Restaurant! With stunning views of the canal below it is such a gorgeous spot.

**Trips Available:**

- 45 Minute Dudley Underground Experience
- 4 Hour Open Water Cruise
- 4 Hour Dudley Tunnel Trip
- 6 Hour Two Tunnel Tour Dining Cruises

**There really is something for everyone!**

0121 557 6265  
[INFO@DCTT.ORG.UK](mailto:INFO@DCTT.ORG.UK)  
 Birmingham New Road, Dudley, DY1 4SB

[www.dudleycanaltrust.org.uk](http://www.dudleycanaltrust.org.uk)

**DUDLEY CANAL & CAVERNS**

Facebook, YouTube, Instagram, Twitter icons

Many of these can be found in the Park's four-mile drive-through safari, with the option to see some of the animals on foot in the Discovery Trail, African Village, Tiger Tropics and African Walking Trail.

Guests can also step back in time and witness prehistoric animals that used to roam the earth, in Ice Age and Land of the Living Dinosaurs.

Throughout the year, guests will be invited to come along and celebrate 50 years of animals, conservation, theme park rides and attractions.

Special events will be included in the admission, for the school holiday periods, including seasonal events for Halloween and Christmas.

The Adventure Theme Park will also be open until the end of October, featuring both rides for thrill seekers and for all of the family. There is also Boj's Giggly Park play area, for youngsters.

In 2021, the Park introduced Safari Lodges - luxury lodges immersed in some of the new animal habitats, offering fantastic views of the animals whilst allowing guests to stay onsite for the first time.

The Park now has 22 lodges, offering unrivalled views of cheetahs, African elephants, Sumatran tigers, red pandas, giraffes and rhino. Four more lodges are being built this year alongside a new lion habitat, which will allow guests to see lions on foot for the first time in the Park's history.

West Midland Safari Park is open for its summer season until the end of October 2023. The animal attractions, shows and encounters are included in the admission charge (when booking online in advance), starting from £22.00 for adults and children aged 3-15 and £19.00 for concessions. Children under the age of three are free.

The Adventure Theme Park is open until the end of October and rides are charged extra. Admission includes a Free Return to visit again within six months, only when booking online in advance.

Further information about West Midland Safari Park is available from the Park's website [www.wmsp.co.uk](http://www.wmsp.co.uk) or by telephone on **01299 402114**. Find out more on the Safari Park's official Facebook page: [www.facebook.com/WestMidSafari](https://www.facebook.com/WestMidSafari)

We have several family tickets to give away in the West Midland Safari Park Great 50 Year Celebration Competition. To enter please answer the following question...

### Who originally opened the Safari Park?

Email your answer and contact details, including the words 'West Midland Safari Park Competition' in the subject line to: [goingplaces@gateway-net.co.uk](mailto:goingplaces@gateway-net.co.uk)

The draw will take place in mid July and the winners notified shortly afterwards.





## Tamworth Castle

### Explore 1,000 years of history

Tamworth Castle is a stunning example of an intact Norman motte and bailey castle, surrounded by beautiful grounds which now hosts a brand new playground too. Come inside and explore our history. We have lots of interactive displays for young and old alike.



### New state-of-the-art interactive exhibition

The top floor of Tamworth Castle has been transformed into a new exhibition which brings our fascinating Anglo-Saxon history to life, including the role of our famous warrior queen, Aethelflaed, and themes of battle, kingship and warrior culture in Anglo-Saxon Mercia.

### See the Staffordshire Hoard

Our new exhibition also includes a mead hall where you can see items from the famous Staffordshire Hoard - the largest hoard of Anglo-Saxon gold ever found.

## NEW EXHIBITION & APP!




Try our NEW Augmented Reality Trail app...  
**Tamworth AR Explorer**  
 ...to really see our history come to life!



## www.tamworthcastle.co.uk

TAMWORTH CASTLE, HOLLOWAY, TAMWORTH, STAFFORDSHIRE. B79 7NA




Battle and Tribute is supported by The National Lottery Heritage Fund, as well as Tamworth Borough Council, the Friends of Tamworth Castle and the Arts Council. Staffordshire Hoard photo credit: Birmingham Museums Trust on behalf of Birmingham City Council and The Potteries Museum & Art Gallery, Stoke-on-Trent.

# More canal history to explore this year

Dudley Canal & Caverns have been very busy adding new offers for 2023 to ensure there is so much more to see and do!

More of the towpath and new interpretation is now available to everyone showcasing how important the canals have been throughout history. The historic boat area has had a makeover and there are now opportunities to climb aboard and see for yourself how our ancestors lived and worked aboard the workhorses of the cut.

In Hurst Cavern, a new digital display better tells the story of the miners themselves and how integral they were to the extraction and use of limestone. Animated figures, live storytelling and digital technology all combine to create an informative and thought-provoking scene.

The recently updated and decorated Gongoozler Café Restaurant, with its canal side dining and plush seating overlooking the canal, is a perfect place to enjoy a bite to eat, a cup of coffee or a cool glass of something fizzy.

They have a jam-packed events calendar planned for this year, including the ever-popular Halloween and Christmas specials.

On site facilities include free coach and car parking, various rotating exhibitions, a well-stocked gift shop, and of course the Gongoozler Café Restaurant. Dudley Canal & Caverns' site is completely wheelchair accessible, including the boats!

You can check out [www.dudleycanaltrust.org.uk](http://www.dudleycanaltrust.org.uk) for more information.



# Join the Love Tamworth Quest

A new family friendly 'Love Tamworth' augmented reality trail offering mini games and challenges in and around Tamworth town centre is now live.

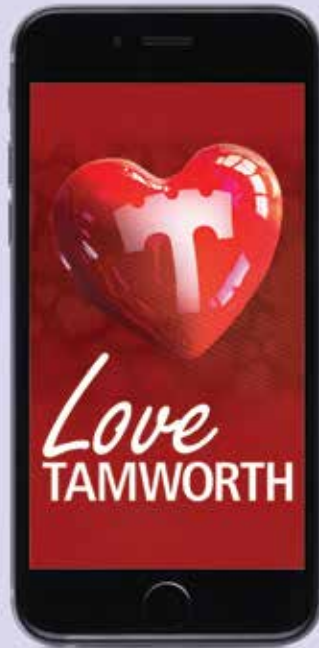
The trail, delivered by Tamworth Borough Council, encourages people to explore the town and seek out 11 virtual Love Tamworth tokens by completing mini games at key locations, collect all tokens to be in with the chance to win a prize.

The app comes with a fully interactive map and guide on how to access each point. Simply follow the map to the correct locations then scan the location with your phone and wait for the magic to happen!

People are invited to spend a couple of hours in the fresh air to experience the excitement of the latest technology and discover the 11 AR locations on the trail, and people will hopefully see things in the town that they've not noticed before.

Any age is welcome to take part in the app, but a smart phone is needed to take part.

Download the free app by searching Tamworth AR trails in the Google play or Apple app store and take the Love Tamworth quest!



## Claymills Victorian Pumping Station

Please visit our website  
**[www.claymills.org.uk](http://www.claymills.org.uk)**  
for steaming dates and many  
special events.

Meadow Lane, Stretton, Burton-on-Trent DE13 0DA  
01283 509929 • [enquiries@claymills.org.uk](mailto:enquiries@claymills.org.uk)

[goingplacesuk.com](http://goingplacesuk.com)



National  
Trust

## Lifelong memories

made at National Trust  
places in Herefordshire

Visit Berrington Hall, Brockhampton, Croft Castle and The Weir Garden and get closer to nature with our many walks, trails and natural play areas.

You're never far from an adventure in Herefordshire.

Find out more by visiting [nationaltrust.org.uk/visit/worcestershire-herefordshire](http://nationaltrust.org.uk/visit/worcestershire-herefordshire)

© National Trust 2023. Registered Charity no. 205846.  
Photography © National Trust Images/Paul Harris





**Shrewsbury Flower Show**  
Friday 11<sup>th</sup> and Saturday 12<sup>th</sup> August 2023

**SO MUCH MORE THAN A FLOWER SHOW**  
Early Bird Tickets now available to purchase online

For further information call 01743 234050 [www.shrewsburyflowershow.org.uk](http://www.shrewsburyflowershow.org.uk)

[goingplacesuk.com](http://goingplacesuk.com)

**SMALL BREEDS FARM PARK**



Whatever the weather, come rain or shine... we are open 10am-5pm everyday

**SEASON TICKETS NOW AVAILABLE FOR 2023**  
Adults £55 • Children £37.50

**Small Breeds Farm Park & Owl Centre**  
Kington, Hereford HR5 3HF  
T: 01544 231 109  
E: [info@owlcentre.com](mailto:info@owlcentre.com)  

## One of the world's longest running flower shows

This year Shrewsbury Flower Show will be celebrating its 134<sup>th</sup> year, making it one of the world's longest running independent flower shows.

On Friday 11<sup>th</sup> and Saturday 12<sup>th</sup> August The Quarry, a beautiful 29-acre park in the heart of Shrewsbury, will once again be awash with wonderful flowers, fabulous food and live entertainment, making it the ultimate summer day out!

Attractions for all ages will include stunning floral arrangements and inspiring show gardens, equestrian competitions, children's entertainment and live music. We will be joined by a celebrity gardener and chef, as well as performances by top musicians.

There will be shopping opportunities to be had along with a dedicated food hall and a large trade stands area. Both days will be topped off with choirs, the massed bands finale and a colourful fireworks display.

For more information [www.shrewsburyflowershow.org.uk](http://www.shrewsburyflowershow.org.uk)



## TOURISM AWARDS

Every year Going Places awards attractions and businesses special recognition for those who have provided an excellent experience, whether it be for quality of attraction, an overall experience, friendliness of welcome, cleanliness, attention to detail, children's facilities etc.

If you would like to nominate an attraction or business you have visited from the advertisers in this paper please send your nomination and your name and address to:

Going Places, 28 Hastings Road, Nantwich, Cheshire CW5 6GL

**All entries will be entered into a free prize draw**



# Shropshire Hills Discovery Centre

the home of Grow Cook Learn

Just off the A49 in Craven Arms

Open daily 10am - 5pm



Visit Shropshire Hills Discovery Centre in Craven Arms where you can explore 30 acres of riverside meadows, with all ability access paths and wild play, enjoy delicious local lunches and cakes, all made from scratch on the premises in the cafe.

Visit the Shropshire Hills Through Time exhibition where you can meet the Conover Mammoth and dip into the stories of some of the people, places and products within this special landscape.

Family friendly events/activities and adult courses/workshops throughout the year.

01588 676 060

[www.shropshirehillsdiscoverycentre.co.uk](http://www.shropshirehillsdiscoverycentre.co.uk)[info@shropshirehillsdiscoverycentre.co.uk](mailto:info@shropshirehillsdiscoverycentre.co.uk)

School Road • Craven Arms • Shropshire • SY7 9RS



# BURWARTON SHOW

**THURSDAY 3 AUGUST 2023**

on the B4364 between Ludlow and Bridgnorth


 e-tickets  
available  
now

 ATKINSON ACTION  
HORSES

 ALDABRA GIANT  
TORTOISES

 RIDGESIDE  
FALCONRY

**LIVESTOCK, EQUINE, HANDICRAFT AND HORTICULTURE, TRADESTANDS & YOUNG FARMERS**

 Enquiries: 01746 787535 [info@burwartonshow.co.uk](mailto:info@burwartonshow.co.uk)
[www.burwartonshow.co.uk](http://www.burwartonshow.co.uk)


 @Burwarton\_show

## A date for your diary

With heavy emphasis on a traditional agricultural show, Burwarton Show features cattle, sheep, pigs and sheep shearing, trade stands, food hall, handicrafts, horticulture, horses and much more. Learn how to fly cast around the Mill Pool or wood turn an item to take home.

Main ring entertainment will include the Atkinson Action Horses - A team of highly trained horses and riders who will entertain you with their dare devil, heart-stopping stunts, supported by Ridgeside Falconry with their magical display.

Children's activities include the Panic Family Circus (non animal) whilst the Village Green will entertain with a traditional Punch and Judy, Magic Russ, singing and accordion band playing. The Aldabra Giant Tortoises are on their way back as they are always so popular.



# Attraction celebrates 20th Anniversary

Matlock Farm Park in Derbyshire is looking forward to celebrating their 20th birthday this spring.

The attraction has come a long way since humble beginnings, recently winning Visitor Attraction of the Year for the second year running and the Accessible & Inclusive Tourism award through the official regional tourism board, Visit Peak District & Derbyshire. The park's farm supervisor also won Visit England's Tourism Superstar award and they've also just won Best Event for their annual Peak District Highland Games from the National Farm Attractions Network.

The farm park has seen continual reinvestment in the last few years, with new state of the art play areas and improved facilities for all. The venue offers popular parties and school visits and there is a horse-riding school.

Lotty Hawkins, Assistant Manager, is looking forward to the anniversary celebrations planned for Spring: 'We've lots going on including an exciting prize giveaway campaign. After this we have a great calendar of special events throughout the year. 2023 is going to be a great year for Matlock Farm Park!'

For more information visit [www.matlockfarmpark.co.uk](http://www.matlockfarmpark.co.uk)



**SO MUCH MORE TO EXPERIENCE AT WESTONS**



**SEE HOW THE WESTONS CIDER MAGIC HAPPENS WITH OUR TOUR AND TASTING EXPERIENCE.**  
Find out how we make our award-winning brands at our family-owned mill, nestling in the hills of Herefordshire's apple and perry pear orchards.

**VISITOR CENTRE & SHOP OPENING HOURS**  
Monday-Friday: 9am to 5pm  
Saturday: 10am to 7pm  
Sunday & Bank Holidays: 10am to 5pm

[www.westons-cider.co.uk](http://www.westons-cider.co.uk)

The Bounds, Much Marcle, Ledbury, Herefordshire, HR8 2NQ

## WHAT'S ON Billy's THIS YEAR AT Farm Barn 2023

**February Half Term (18th - 26th February)**  
Meet the Animals | Get hands on and feed the lambs

**Easter Holidays (1st - 16th April)**  
Easter Trail | Easter Egg Hunt (Easter Sunday) (Additional Cost) | Feed the Lambs | Billy & Friends | See the Chicks

**May Half Term (27th May - 4th June)**  
Animal Hand Painting | Meet the Animals | Seed some Grass for the Bunnies | Animal Activities (Monday - Friday)

**Six Weeks of Summer (26th July - 1st Sep)**  
Animal Activities (Weekend & Holiday) | Tractor Week (Daily 10am - 12pm) | Beach Theme (Daily 10am - 12pm) | Billy & Friends | Meet & Greet (Monday 26th - 28th) (Ticketed)

**Halloween (28th October - 5th November)**  
Pick Your Own Pumpkins | Witch Event (Ticketed) | The Maize Maze | Monster Trail | Hocus Pocus Evenings (Ticketed)

**Christmas at Amerton Farm (Nov & Dec)**  
Light Switch On 24th November | Magical Christmas November - December (Ticketed) | Twilight Christmas November - December (Ticketed) | Breakfast with Santa (Ticketed) | Breakfast with Elsa (Ticketed)

**BOOK ONLINE**  
[amertonfarm.co.uk](http://amertonfarm.co.uk)

**Amerton Farm**  
Amerton Farm Ltd, Stone by Chertsey 16, Stafford, Staffordshire ST18 8LA  
Tel: 01899 270294 | Fax: 01899 271262 | email: [office@amertonfarm.co.uk](mailto:office@amertonfarm.co.uk) | [www.amertonfarm.co.uk](http://www.amertonfarm.co.uk) | facebook: Amerton Farm  
A great day out for everyone!

## A fun day out in the heart of Staffordshire

Come down to Amerton Farm for a summer fun day out, you can enjoy an indoor and outdoor play area, try bottle feeding the lambs or calves, and feeding other animals.

You can watch cows being milked, and even brush the bunnies. Horse rides are a must but only at designated times. There are daily tractor and trailer rides, Indoor Tractor Track, Outdoor go-kart track and outdoor bouncing pillows.

More amazing things to do are the Summer Water Wars Mini Maize Maze and you can visit a huge range of animals including cows, pigs, sheep, ducks, peacocks, alpacas, reindeer, ponies,

donkeys rabbits and guinea pigs.

After all that enjoy a delicious ice cream or milk shake before visiting the toy shop. Amerton Farm is also the home to 21 small rural businesses, including a farm shop, Kendal's kitchen, candle workshop and paint a pot.

General admission and car parking is free, but there is an admission charge to enter Billy's Farm Barn and the railway. Open every day of the year, except Christmas Day, Boxing Day and New Year's Day.



We have several family tickets to give away to visit Billy's Farm Barn. To enter please answer the following question...

**What is the name of the indoor play area at Amerton?**

Email your answer and contact details, including the words 'Amerton Competition' in the subject line to: [goingplaces@gateway-net.co.uk](mailto:goingplaces@gateway-net.co.uk)

The draw will take place in mid July and the winners notified shortly afterwards.



## EXPLORE ROSLISTON...

Head on over to Rosliston Forestry Centre in the heart of the National Forest and explore, play and exercise. Our mix of woodland and meadow, ponds and play areas offer the perfect playground for visitors of all ages all year round. Bring a ball or rent a bike and explore the 154 acres.



## REFRESH AND RELAX...BOOK YOUR OWN ADVENTURE

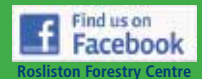


Take time out to visit the bird hide, refresh your mind in the sensory garden or fish the lake. Bring a picnic or reserve our bbq area, read a book whilst you rest for a while or simply sit back and enjoy a stay in our woodland lodges where people and nature reconnect.

Soft play party bookings, trail walks or forest activities with our environmental education team.



Check out our website [www.roslistonforestrycentre.co.uk](http://www.roslistonforestrycentre.co.uk) or follow us on Facebook to find out more



Burton Road, Rosliston, Swadlincote, Derbyshire DE12 8JX Telephone: 01283 563483 Email: [enquiries@roslistonforestrycentre.co.uk](mailto:enquiries@roslistonforestrycentre.co.uk)

# Get the runaround at Rosliston

Bring a ball and some energy for a game on the meadow, walk your dog or simply take a stroll around the 154 acres of woodlands and paths. Relax with plenty of space and quiet spots for a picnic or grab yourself a treat at the Hub café, book a birds of prey experience with the onsite falconers or enjoy an ice cream whilst you take a look at the new locally produced goods in our shop.

The Glade wedding venue opens April to October and our lodges are open all year round for short breaks or weeks away with family and friends.

For more information visit [www.roslistonforestrycentre.co.uk](http://www.roslistonforestrycentre.co.uk)



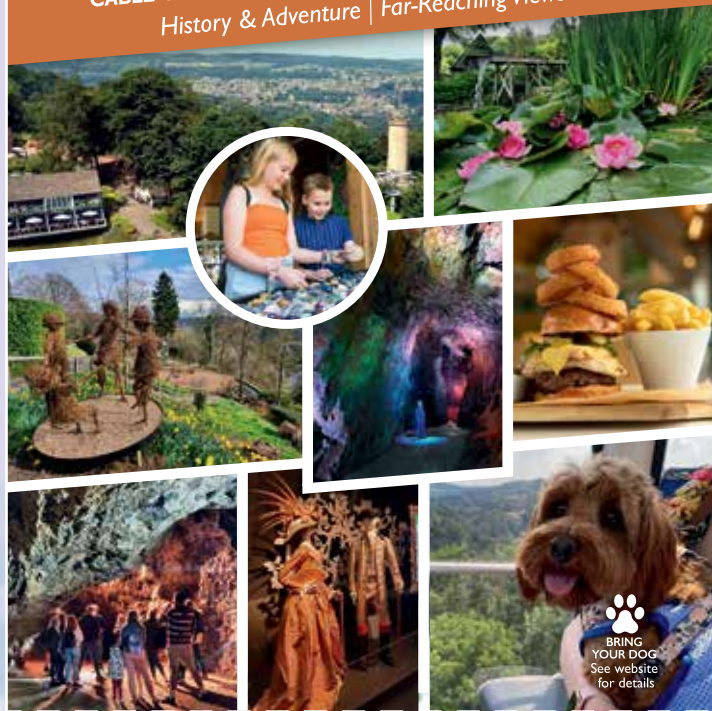
Exhibitions | Woodland Play Areas | Café | Vista Restaurant & Bar  
Film Theatre | Heritage Trails | Gardens | Sculpture Trail

# HEIGHTS of Abraham

Est. 1787



## YOUR FLIGHT AWAITS

CABLE CARS, CAVERN TOURS & 60 ACRE HILLTOP PARK  
History & Adventure | Far-Reaching Views

## JUST THE TICKET!

Your cable car ticket provides free access  
to all our attractions.**SAVE £3.00 per adult**  
with this voucher**Simply cut out this voucher and bring it along to the  
ticket office to claim a £3 reduction on full price  
adult cable car tickets.**

Terms and conditions: Valid until June 1st 2023. No photocopies.  
Not valid for online ticket sales. One voucher per transaction.  
Not valid in conjunction with any other offers or discounts.

For opening times and what's on see:

**www.heightsofabraham.com**Matlock Bath, Derbyshire. **SAT NAV: DE4 3NT****CODE: GOINGPLACES2023**

## A year of fantastic happenings

Transport yourself back to 1750... Matlock Bath was full of wealthy Georgian tourists who believed that 'taking the waters' of Matlock Bath would do wonders for their health. One entrepreneurial hotel owner decided this was a great opportunity to make money - and so bought land on Masson Hill in 1780 to create a 'pleasure ground'.

It took the businessman 7 years to plant exotic trees and shrubs, create serpentine paths, and generally tidy the area up after years of mining had left it a barren wasteland. Once the site was ready, tourists from far and wide came to walk up the paths and experience the sublime 360-degree views from the summit.

Now fast-forward to 1810... The Heights of Abraham had become an established attraction, known throughout the UK and frequented by the rich and famous. The Great Rutland Cavern was opened to the public, followed by the Great Masson Cavern in 1844. Ex-miners became tour guides, showing the wealthy tourists around the mines for a high price.

In 1974, the present owners bought the estate and had great visions for the future. After 10 years of restoring the Heights to its former glory, they decided the site needed something new to please the modern tourists. This was when the cable car was built, making the ascent to the summit easy, and creating a unique experience for UK tourists.

This is the Heights of Abraham that we know today, a unique place built on history and innovation. Modern visitors tread in the footsteps of royalty, revolutionary industrialists, writers, and artists. But the story doesn't end there, what will you discover?

2023 has been billed as 'The Year of Fantastic Happenings' at the Heights of Abraham. There will be live music on most weekends from 25th March until November 5th, living history actors during the week days, a fabulous Punch and Judy show during the summer holidays and a series of special events taking place throughout the year, including a return of our popular Halloween Grotto in the Rutland Cavern during October half term.

Visit our website for full details

**[www.heightsofabraham.com/whats-on](http://www.heightsofabraham.com/whats-on)**

## THE PEAK DISTRICT MINING MUSEUM & TEMPLE MINE

Discover the life of a miner in this hands-on museum. Clamber through the tunnels, wind handles and see minerals from around the world.

Then visit a real mine! Put on a helmet and find out where the minerals came from. Back on the surface you can pan for minerals and take home what you find.



CHECK OUR  
REVIEWS ON  
TRIPADVISOR  
& GOOGLE

Find us in the **Grand Pavilion at Matlock Bath**.  
For opening times, prices and current events visit  
[facebook.com/peakmines](https://facebook.com/peakmines) or phone **01629 593834**

## When one day just isn't enough!

Sundown Adventureland is a family run theme park for the under 10's. As you explore the huge park you'll find singing animals, yodelling goats and amazing rides everywhere.

Hop aboard the Rocky Mountain Railroad for a ride through the Wild West, take the Tractor Ride for a trip around the countryside before talking to the animals at Sundown Farm, or even join Robin Hood's Merry Adventure Ride to meet Robin and his merry men, as they travel through Sherwood Forest.

Then it's onto Crash Landings – our fantastic four storey indoor play area and café, climb and explore the jungle where you may get a surprise from a cheeky monkey or a slippery snake.

If one day just isn't enough then why not book yourself and family into our brand new Wild Acre Village and stay in our beautifully designed, super family friendly lodges.

**The Theme Park uniquely designed for the under 10's**

**YOUR ADVENTURE IS JUST BEGINNING THE MOMENT YOU ENTER THE PARK!**

Explore **Fort Apache**, the cowboy street and **Rodeo Corral's** indoor play area and Café. Ride aboard the **Rocky Mountain Rail Road**, **Santa's Sleigh Ride**, **Robin Hood Ride**, **Tractor Ride** and be careful you don't get wet on the **Jolly Pirate Barrel Ride**. Play along with the Monkeys at **Monkey Mischief** and in **Crash Landings** fantastic 4-storey indoor play area.

Also while you're here you can explore **Captain Sandy's Play Cove**, **Angry Birds** play area and our new **Ostrich Safari Ride**, a full day of fun awaits you! Adventure play areas, shops cafes and lots more.

**So, what are you waiting for?...**

Rampton, Retford, Notts DN22 0HX T: 01777 248274  
[www.sundownadventureland.co.uk](http://www.sundownadventureland.co.uk)

**Interactive animal and playtime fun all year round!**

**matlock farm park**

See our website for more details: [matlockfarmpark.co.uk](http://matlockfarmpark.co.uk) and keep up to date on our social media pages.

PEAK DISTRICT & DERBYSHIRE TOURISM AWARDS 2023 VISITOR ATTRACTION GOLD AWARD

Facebook YouTube Instagram Twitter

Also available:  
**Birthday Parties • School Visits  
On-site Riding School**

Matlock Farm Park, Jaggars Lane, Matlock DE4 5LH  
Tel: 01246 590200

**PAPPLEWICK PUMPING STATION**

Enjoy a fascinating day out at Britain's finest Victorian Pumping Station. In steam on Bank Holidays and selected weekends. Pre-booked group visits welcome throughout the year. Also open on Wednesdays & Sundays 11am-3pm.

Just off the A60 between Mansfield & Nottingham NG15 9AJ  
Tel: 0115 9632938 [www.papplewickpumpingstation.org.uk](http://www.papplewickpumpingstation.org.uk)

 **Tolethorpe**

**2023 Season**

**6 JUNE - 26 AUGUST**

William Shakespeare's  
**As You Like It**  
**Measure For Measure**

Alan Bennett's  
**The Lady In The Van**

Jessica Swale's  
**Blue Stockings**

**SSC** Stamford  
Shakespeare  
Company

[tolethorpe.co.uk](http://tolethorpe.co.uk)



## Living on my driveway for 15 years!

The Rutland Open Air Theatre at Tolethorpe Hall is described by The Stage as 'One of England's premier alfresco theatre venues', where you can enjoy a picnic in the glorious grounds, then take your seat, protected from summer showers, and see one of four fantastic plays:

Shakespeare's marvellous morality play *Measure For Measure*, relocated to the glamorous world of Vienna in the early 1900s.

Enter the Forest of Arden for Shakespeare's *As You Like It* and get entangled in a beguiling game of love, lust, and mistaken identity. Will love conquer all, or is it merely a summer madness?

Alan Bennett's *The Lady in the Van* tells the wonderfully bittersweet story of his encounters with the crabby and eccentric Miss Mary Shepherd, who lived in her van on his driveway for 15 years.

Jessica Swale's *Blue Stockings* is the story of four young women's fight for the right to graduate.

New for the 2023 season is The Bistro at Tolethorpe Hall. Focussing on local produce and exceptional quality, The Bistro offers informal dining with set menus, light bites and simple meals.

For more information telephone the box office on **01780 917240** or visit [www.tolethorpe.co.uk](http://www.tolethorpe.co.uk)



**...for premier times**

Pick up a leaflet from your local  
Tourist Information Centre and you'll  
be off to a great family day out.





## White Water Rafting Canoeing & Canyoning in Snowdonia National Park

on the River Tryweryn, near Bala, North Wales, LL23 7NU  
call **01678 521083**  
visit [www.nationalwhitewatercentre.co.uk](http://www.nationalwhitewatercentre.co.uk)

 **AALA**  
ADVENTURE ACTIVITY  
LEARNING AUTHORITY

 **National White Water Centre**  
Canolfan Dŵr Gwyn Genedlaethol

## A mammoth discovery in Shropshire

The Shropshire Hills Discovery Centre is the perfect place to start your exploration of the Shropshire Hills.

The Centre's Shropshire Hills Through Time exhibition explores the local area through the years, starting at the Ice Age with the life-sized replica mammoth skeleton. The awe-inspiring drone footage film over the hills will whet the appetite of explorers of all ages to head out to see the stunning views for themselves.

With a jam-packed events programme, the Centre is a hub of activity all year round. From family activities throughout school holidays, Flicks in the Sticks Films, walks, talks and adult courses, there is something for everyone to enjoy.

The Shropshire Hills Discovery Centre is run by local charity, 'Grow Cook Learn', who are committed to connecting people to the food, history and landscape of the Shropshire Hills.

For more information visit  
[www.shropshirehillsdiscoverycentre.co.uk](http://www.shropshirehillsdiscoverycentre.co.uk)



## LLANGOLLEN HORSEDRAWN BOAT CENTRE



### Boat trips along the beautiful Dee Valley World Heritage Site

#### Aqueduct Cruise

Join us for our 2 hour Motor Boat Cruises across the mighty Pontcysyllte Aqueduct. There is a full commentary as we cruise gently along the Dee Valley. The boat is centrally heated and has a full bar and toilet facilities. We also operate 4 hour special trips including food.

#### Horse Drawn Boat Trips

Our purpose built Horse Drawn Boats operate 45 minute trips at regular intervals throughout the day. We also run 2 hour trips to the Horseshoe Falls at weekends and in school holidays. Pulled by our gorgeous heavy horses this is the ideal way to experience the beauty and tranquility of the upper reaches of the Llangollen Canal. All our trips can be booked online at [www.horsedrawnboats.co.uk](http://www.horsedrawnboats.co.uk)

#### Tea Room

Our Tea Room is in an ideal location alongside the canal looking over the lovely market town of Llangollen. In addition to a full range of teas and coffees we offer an extensive menu of homemade food. All our cakes are baked on the premises. The Tea Room is open 7 days a week in the season and at weekends in the winter.

Llangollen Wharf • Wharf Hill • Llangollen LL20 8TA • Telephone: **01978 860702**

[www.horsedrawnboats.co.uk](http://www.horsedrawnboats.co.uk)



goingplacesuk.com



## ONE BEAUTIFUL NATIONAL PARK • TWO GREAT RAILWAYS •

An ideal way to relax and enjoy the beauty of North Wales  
Steam trains run every day - from April 1<sup>st</sup> to October 31<sup>st</sup>  
Wide range of journey options for you to choose from

### • ONLINE BOOKING - VISIT WITH CONFIDENCE •

You can book in advance, check-in on arrival, choose your seats on the train - then sit back, relax and enjoy your day.

### FESTINIOG & WELSH HIGHLAND RAILWAYS

- Harbour Station, Porthmadog, LL49 9ND
- St. Helen's Street, Caernarfon, LL55 2PF

More information @ [www.festrail.co.uk/trains](http://www.festrail.co.uk/trains)



**Improved Visitor Experience  
Opens During 2023**

**Please visit  
our website  
for timetable  
& bookings**

**Unique First Class  
Experience on Every Train**

*Celebrating over 100 years  
of Continuous Operation*

*Celebrating the Centenary  
of our Upper Gwyn Valley Station*

**STUNNING SCENERY FROM THE COAST TO THE CAMBRIAN MOUNTAINS**  
**RHEILFFORDD CWM RHEIDOL VALE OF RHEIDOL RAILWAY**  
info@rheidolrailway.co.uk 01970 625 819 [www.rheidolrailway.co.uk](http://www.rheidolrailway.co.uk)

# YORKSHIRE AIR MUSEUM

## AMAZING MACHINES INCREDIBLE STORIES

**HONOUR | EDUCATE | INSPIRE**

Over 60 aircraft and vehicles, including 'Friday the 13th' - the only Halifax MkIII in existence  
Based on the site of a WW2 RAF bomber base with many of the original buildings surviving

ALL ENQUIRIES

[www.yorkshireairmuseum.org](http://www.yorkshireairmuseum.org)

HALIFAX WAY | ELVINGTON | YORK | YO41 4AU

The Yorkshire Air Museum and Allied Air Forces Memorial is a registered charity (No. 516766)

**YORKSHIRE  
AIR  
MUSEUM**

2023 Travellers' Choice  
TIP-ADVISOR

Follow us:  
Instagram Facebook Twitter

honister.com

# MOUNTAIN ADVENTURE



**'The home of ADVENTURE in the Lake District'**

## Adventure deep into the mountain!

If you're looking for a unique and educational day out in the heart of the Lake District National Park, Honister Slate Mine's guided mine tour is an experience not to be missed. Located along the stunning Honister Pass, the mine has produced slate for over 300 years and offers a fascinating glimpse into the area's history.

The guided tours take you deep into the mountain and underground mine caverns and provide visitors with the opportunity to learn about the geology, history, and cultural significance of slate mining in the area. The tour guides are knowledgeable and passionate about their work, providing engaging commentary on the mining techniques used throughout history and sharing stories of the people who worked in the mines.

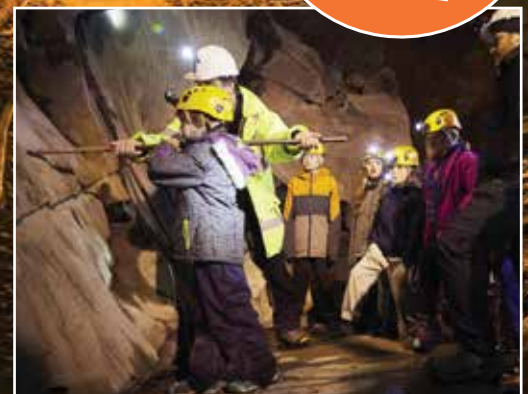
The tour is interactive and engaging for the whole family, allowing visitors to see the tools used to extract the slate and interesting artefacts left in the disused areas of the mine. The mine also allows visitors to spectate over the processing plant, where workers can be seen transforming the raw slate into the beautiful and durable products used in construction, building signs, gravestones, homewares, gifts and furniture.

Whether you're a history buff, geology enthusiast, or just looking for a fun and educational day out with the family, Honister Slate Mine's guided tours are a great option. The tours are suitable for all ages and offer a unique opportunity to learn about the heritage of the area and the importance of slate mining in the local economy.

One of the great things about Honister mine tour is that they offer a fantastic deal for families. One child under eight can go for free with each paying adult on their 10.30am daily tour. This makes it an affordable option for families, especially those on a budget.

Visit [www.honister.com](http://www.honister.com) to book your visit.

**UNDER  
8'S GO  
FREE**





Matlock Park Farm - see advert on page 10

# GOING PLACES UK

  [www.goingplacesuk.com](http://www.goingplacesuk.com)